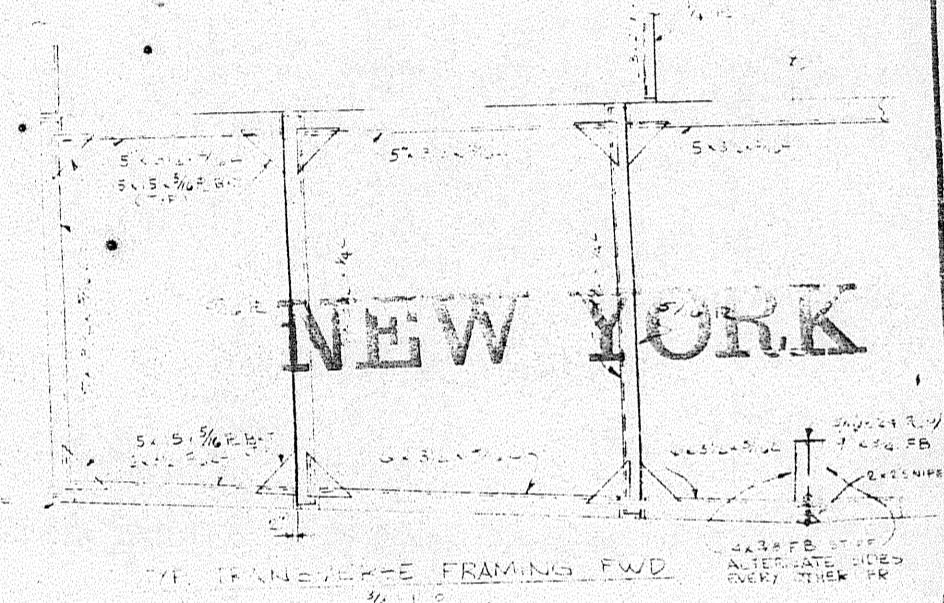
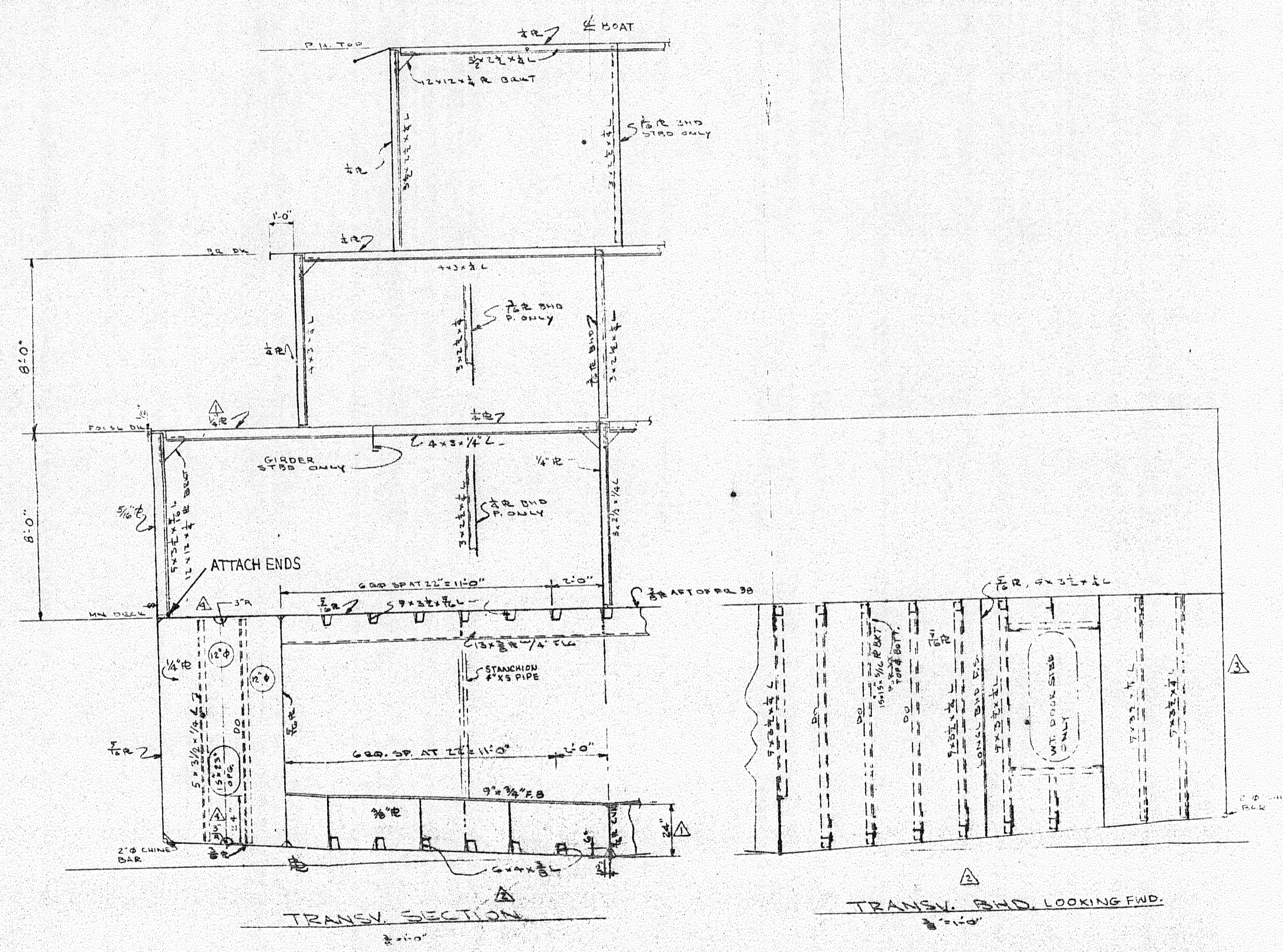


1-0F64

REV. NO.	DESCRIPTION	BY	DATE	APPROV.
1	REVISED WHERE INDICATED	JES	12/2/50	
2	GENERAL REVISIONS	P.C.B.	1-20-51	
3	DELETED LONG. STIFFENERS ON TRANSV. BHD.	P.C.B.	1-26-51	
4	REVISED DWG. PER TIDEWATER MARKED UP PRINT	R.K.	2-28-51	G.T.F.



FILE COPY	
4	RECEIVED
1	FILE NEW YORK
1	FILE NEW ORLEANS
1	FILE NEW ORLEANS
0	UNUSE
INITIALS	

APPROVED  
31 MAR 1951  
*P. H. Starks*



MISS. MARINE TOWBOAT CORP. 4411 #90

**DESIGN ASSOCIATES, INC.**  
NAVAL ARCHITECTS MARINE ENGINEERS  
NEW ORLEANS, LA.

TIDE WATER MARINE SERVICE

145' x 36' x 10' SEISM. VESSEL

MIDSHIP SECTIONS

Drawn: J.M./R.B.	Date: 1/13/50	Checked: A.L.S.
Traced:	Date:	Checked:
Apprd:	Date:	Scale: 1/4" = 1'-0"
Sheet: 1 of 1	Drawing No. C-2042-4	Revision Mark: